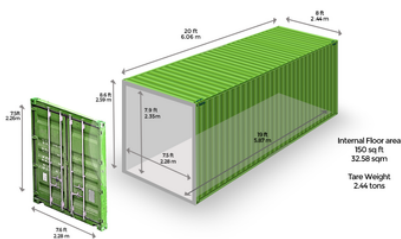


# HOW TO SELECT THE RIGHT SHIPPING CONTAINER FOR COMMERCIAL TRANSPORT

If transporting goods is a crucial factor in your business growth, you are already aware of the delicate balance it involves between time and cost-effectiveness. To that end, you need to carefully select the shipping methods, the best possible route, and the right shipping container.

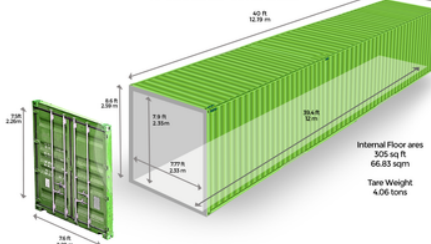
## 20' STANDARD CONTAINERS

20' STANDARD CONTAINER:



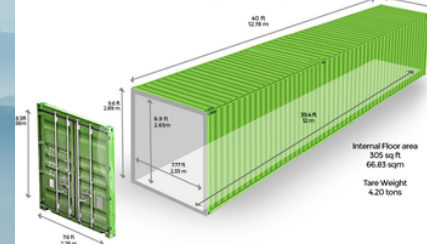
## 40' STANDARD CONTAINERS

40' STANDARD CONTAINER:



## 40' HIGH CUBE (HC)

40' HIGH CUBE CONTAINER:



These general purpose containers will accommodate a maximum cargo weight of 28.2 tons or a volume of 33m<sup>3</sup>, whichever is reached first. Always make sure your freight forwarder provides equipment that obeys international standards.

A 40' container is great for shipping lighter but more voluminous cargo. Maximum weight takes the tare into account, longer containers "lose" in weight capacity but make up for it in terms of cubic load. You can transport as much as 67.5m<sup>3</sup> in a 40'HC

The high cubes are best for cargo with the attributes of being light, voluminous and high. With about 30cm more height, HCs give you an additional 6m<sup>3</sup> of volume (73.5m<sup>3</sup> total), for a maximum weight of 62.5 tons.